

ELECTRICAL TECHNOLOGY

Associate in Applied Science

REQUIRED COURSES

General Education Requirements	Credit	Grade
ENG 101 Writing I	3	___
MAT 116 Technical Mathematics OR	3	___
MAT 126 Technical Algebra & Trigonometry OR (3)	___	___
Higher Level Quantitative Reasoning (3)	___	___
Heritage/Humanities	3	___
Oral Communications	3	___
Natural Sciences	3	___
Social/Behavioral Sciences	3	___
General Education Total	18	

Technical Core Courses:

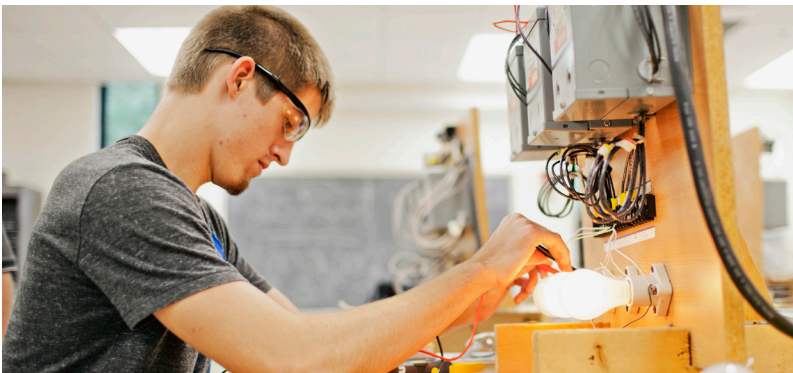
ELT 110 Circuits I	5	___
Approved Course from Tech: Core List	4	___
EET 250 National Electric Code	4	___
EET 264 Rotating Machinery	2	___
EET 265 Rotating Machinery Lab	2	___
EET 270 Electrical Motor Controls I	2	___
EET 271 Electrical Motor Controls I Lab	2	___
EET 127 Electrical Capstone	1	___
Digital Literacy OR	3	___

If any student successfully tests out of Digital Literacy

He/she must take an additional Technical Course

Approved by the Electrical
Program Coordinator

Subtotal **25-26**



ELECTRICAL TRACKS

Industrial Electrician Track

EET 154 Electrical Construction I AND	2	___
EET 155 Electrical Construction I Lab AND	2	___
EET 252 Electrical Construction II AND	2	___
EET 253 Electrical Construction II Lab OR	2	___
EET 254 Electrical Construction AND	(3)	___
EET 255 Electrical Construction Lab	(4)	___
EET 272 Electrical Motor Controls II AND	2	___
EET 273 Electrical Motor Controls II Lab AND	2	___
EET 276 Programmable Logic Controllers AND	2	___
EET 277 Programmable Logic Controllers Lab OR	2	___
EET 278 Electrical Motor Controls II and PLCs AND	(3)	___
EET 279 Electrical Motor Controls II and PLCs Lab	(4)	___
Technical Electives*	8	___
Subtotal	22-24	
Total Credits	65-68	

Construction Electrician Track

EET 154 Electrical Construction I AND	2	___
EET 155 Electrical Construction I Lab AND	2	___
EET 252 Electrical Construction II AND	2	___
EET 253 Electrical Construction II Lab OR	2	___
EET 254 Electrical Construction AND	(3)	___
EET 255 Electrical Construction Lab	(4)	___
Technical Electives*	10	___
Subtotal	17-18	
Total Credits	60-61	

Motor Controls Electrician Track

EET 272 Electrical Motor Controls II AND	2	___
EET 273 Electrical Motor Controls II Lab AND	2	___
EET 276 Programmable Logic Controllers AND	2	___
EET 277 Programmable Logic Controllers Lab OR	2	___
EET 278 Electrical Motor Controls II and PLCs AND	(3)	___
EET 279 Electrical Motor Controls II and PLCs Lab	(4)	___
FPX 100 Fluid Power AND	3	___
FPX 101 Fluid Power Lab OR	2	___
ELT 265 Applied Fluid Power	(3)	___
Technical Electives*	7	___
Subtotal	17-20	
Total	60-63	



STUDENT _____

ID NO. _____ DATE _____

SIGNATURE _____

ADVISOR _____